

# MONTHLY MEMBERSHIP PROGRESS REPORT

LOCATION INDIA

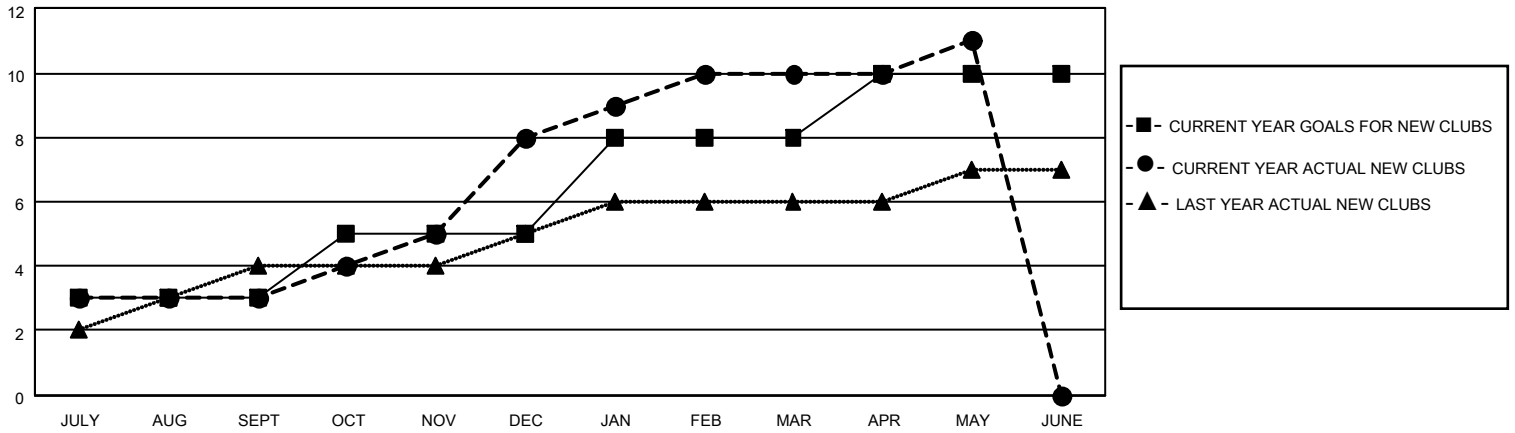
District 324A1

Results as of: 5/31/2021

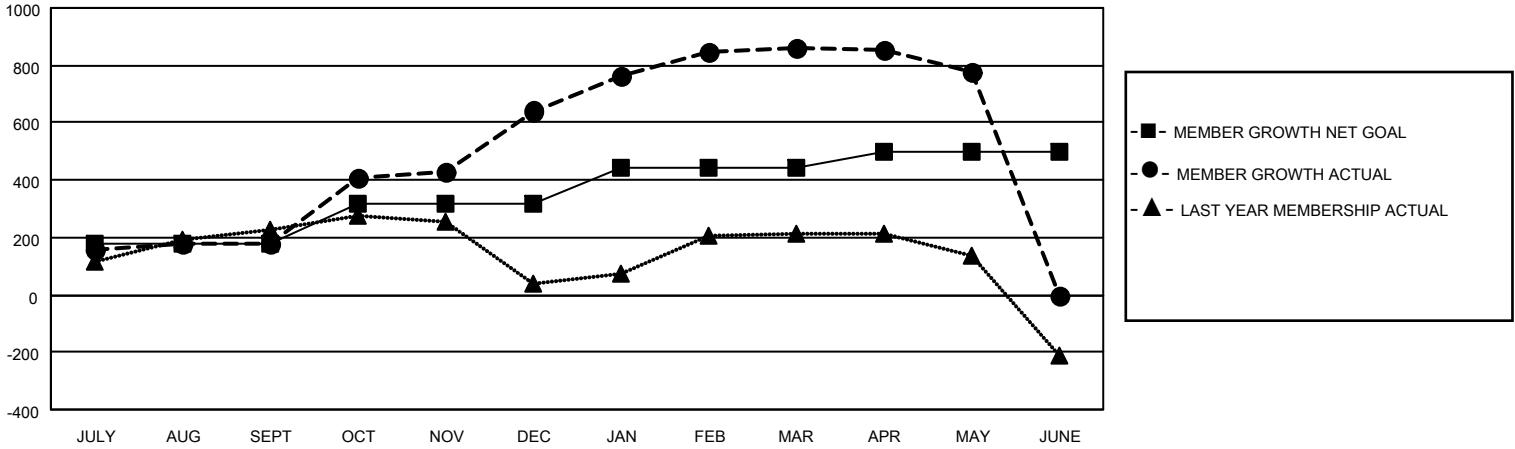
Clubs			
RESULTS FOR 2020-2021			
QUARTER	NEW CLUB GOAL	NEW CLUBS	DROPPED CLUBS
JULY/AUG/SEPT	3	3	0
OCT/NOV/DEC	2	5	0
JAN/FEB/MAR	3	2	4
APR/MAY/JUNE	2	1	0

Members			
RESULTS FOR 2020-2021			
QUARTER	MEMBER GROWTH NET GOAL	MEMBER GROWTH ACTUAL	DROPPED MEMBERS ACTUAL (including transfers)
JULY/AUG/SEPT	180	336	144
OCT/NOV/DEC	140	701	230
JAN/FEB/MAR	120	352	119
APR/MAY/JUNE	60	100	166

**GOALS AND ACTUAL NEW CLUBS CUMULATIVE**



**GOALS AND ACTUAL MEMBERS CUMULATIVE**



DROPPED CLUBS: 4	139 CLUBS OF 190 ADDED 1 OR MORE NEW MEMBERS	<u>GENDER DISTRIBUTION</u> MALE 4,505 (73.17%) FEMALE 1,652 (26.83%)
<u>DROPPED MEMBERS</u> DECEASED 55 CLUB CANCELLED 55 OTHER 549 TOTAL 659	<a href="#">CLICK HERE FOR CUMULATIVE MEMBERSHIP DATA</a>	TOTAL FAMILY UNIT MEMBERS 2,178 FAMILY MEMBERS PAYING HALF DUES 1,219